



Evaluated in accordance with European Standard EN 50086 File No. E233497 (2MD9)

Specification

Material 1.4404 - 316 Stainless Steel
(Lengths and all accessories unless otherwise stated)
1.4301 - 304 Stainless Steel
(Lengths and specified accessories)

Thickness 20-32 mm lengths - 1.5 mm
50 mm lengths - 2.0 mm

Finish Satin (Brushed)

Rating IP67† DIN VDE 0470 TEIL 1/11.92
BS EN 60529 : 1992 - IEC 529 : 1989

Thread ISO form 1.5 mm pitch

Lengths 3.0 m

All conduit boxes, manufactured to IP67†, are supplied with a lid, gasket & screws.

† IP rating is only maintained when all conduit entries and couplings have been adequately sealed.

The use of a thread sealant is recommended on the last two threads of engagement with the conduit box.



Conduit Lengths | Stock Sizes

Conduit Ø (mm)	1.4301 - 304 Part No.	1.4404 - 316 Part No.
20	UK A-D 304*	UK A-D
25	UK B-D 304*	UK B-D
32	UK C-D 304*	UK C-D
50	UK D-D 304*	UK D-D

Please order your couplings separately



Coupling

Conduit Ø (mm)	Part No.
20	UK G20
25	UK G25
32	UK G32
50	UK G50



Flange Coupling

Conduit Ø (mm)	Part No.
20	UK H20
25	UK H25
32	UK H32
50	UK H50



Solid Male Bend

Conduit Ø (mm)	Part No.
20	UK BEND20
25	UK BEND25
32	UK BEND32
50	UK BEND50



Terminal Box



Conduit Ø (mm)	Part No.
20	UK Q20
25	UK Q25
32	UK Q32



Back Entry Box



Conduit Ø (mm)	Part No.
20	UK BE20
25	UK BE25



Angle Box



Conduit Ø (mm)	Part No.
20	UK S20
25	UK S25
32	UK S32



Inspection Elbow



Conduit Ø (mm)	Part No.
20	UK ELB20
25	UK ELB25
32	UK ELB32



Tee Box



Conduit Ø (mm)	Part No.
20	UK T20
25	UK T25
32	UK T32



Inspection Tee



Conduit Ø (mm)	Part No.
20	UK INSP TEE 20
25	UK INSP TEE 25
32	UK INSP TEE 32



Through Box



Conduit Ø (mm)	Part No.
20	UK R20
25	UK R25
32	UK R32



Universal Enclosure



Size (mm)			Part No.
H	W	D	
160	100	85	UK W
160	160	85	UK X
220	220	85	UK Z



Twin Through Box



Conduit Ø (mm)	Part No.
20	UK HBOX20
25	UK HBOX25



Branch Two Way Box



Conduit Ø (mm)	Part No.
20	UK UBOX20
25	UK UBOX25



Branch Three Way Box



Conduit Ø (mm)	Part No.
20	UK YBOX20
25	UK YBOX25



Intersection Box



Conduit Ø (mm)	Part No.
20	UK INTER20
25	UK INTER25
32	UK INTER32



Prevent water ingress ...



... with our blind lid fixings

Distance Saddle



Conduit Ø (mm)	Part No.
20	UK P20
25	UK P25
32	UK P32
50	UK P50



Hospital Saddle



Conduit Ø (mm)	Part No.
20	UK HOSP20
25	UK HOSP25
32	UK HOSP32



Extra Deep Saddle



Conduit Ø (mm)	Part No.
20	UK V20
25	UK V25
32	UK V32



Stainless Steel Metric Conduit System

Munson Ring Kit | 30 mm Clearance



Conduit Ø (mm)	Part No.
20	UK MUN20-30
25	UK MUN25-30
32	UK MUN32-30
50	UK MUN50-30



Munson Ring Kit | 50 mm Clearance



Conduit Ø (mm)	Part No.
20	UK MUN20-50
25	UK MUN25-50
32	UK MUN32-50
50	UK MUN50-50



Munson Ring Kit | 75 mm Clearance



Conduit Ø (mm)	Part No.
20	UK MUN20-75
25	UK MUN25-75
32	UK MUN32-75
50	UK MUN50-75



Extra spacing for easier cleaning



Munson Ring



Conduit Ø (mm)	Part No.
20	UK MUNSTD 20
25	UK MUNSTD 25
32	UK MUNSTD 32
50	UK MUNSTD 50



A

B

C

Munson Spacer | 10 mm Ø



Conduit Ø (mm)	Part No.
50	ROD 50
75	ROD 75
100	ROD 100
150	ROD 150
300	ROD 300



Munson Ring Extension



Conduit Ø (mm)	Part No.
20	UK MUN20
25	UK MUN25
32	UK MUN32
50	UK MUN50

Example use: For installing parallel conduits



Munson Ring | Base



Description	Part No.
With 10 mm female thread to suit 10 mm diameter rod	UK MUN BASE



Munson Ring | 15 mm Clearance



Conduit Ø (mm)	Part No.
20	UK MUNSON 20
25	UK MUNSON 25



Dome Lid



Conduit Ø (mm)	Part No.
20	UK DOME20
25	UK DOME25
32	UK DOME32

Male Bush



Conduit Ø (mm)	Part No.
20	UK I20
25	UK I25
32	UK I32
50	UK I50

Hook Lid



Description	Part No.
For use with 20 mm & 25 mm Conduit Boxes	UK HOOK

Male Bush Long



Conduit Ø (mm)	Part No.
20	UK I20-LONG

20 mm Ø thread
Thread length - 14 mm

Male Hook



Description	Part No.
Fits all Electrix conduit parts with 20 mm female threads	UK MALE HOOK

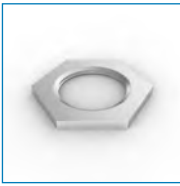
Female Bush



Conduit Ø (mm)	Part No.
20	UK J20
25	UK J25
32	UK J32
50	UK J50

Stainless Steel Metric Conduit System

Locking Nut



Conduit Ø (mm)	Part No.
20	UK K20
25	UK K25
32	UK K32
50	UK K50



Locking Ring



Conduit Ø (mm)	Part No.
20	UK RING20
25	UK RING25
32	UK RING32
50	UK RING50



Stopping Plug



Conduit Ø (mm)	Part No.
20	UK PLUG20
25	UK PLUG25
32	UK PLUG32



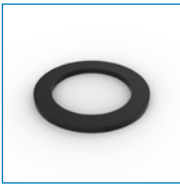
Short Nipple



Conduit Ø (mm)	Part No.
20	UK L20
25	UK L25
32	UK L32
50	UK L50



Neoprene Washer



Conduit Ø (mm)	Part No.
20	UK O20
25	UK O25
32	UK O32
50	UK O50

Long Nipple | 100 mm & 150 mm Long



Conduit Ø (mm)	100 mm Long Part No.	150 mm Long Part No.
20	UK M420	UK M620
25	UK M425	UK M625
32	UK M432	UK M632
50	UK M450	UK M650



NEW

Flat Washer



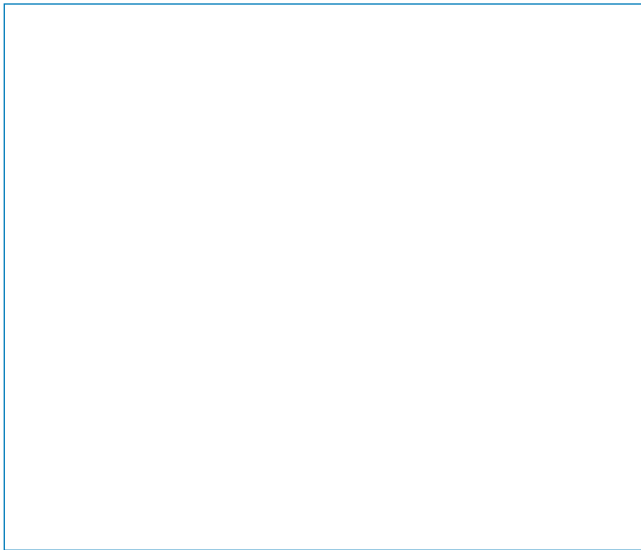
Qty	Description	Part No.
10	M20 Flat Washer (A4 - 316)	M20 FLAT A4 x 10
10	M25 Flat Washer (A4 - 316)	M25 FLAT A4 x 10
10	M32 Flat Washer (A4 - 316)	M32 FLAT A4 x 10
10	M50 Flat Washer (A4 - 316)	M50 FLAT A4 x 10

Chain



Description	Part No.
Thickness - 3 mm (19 x 7 mm Internal)	UK CHAIN

Sold by the metre



Electric Threading Tool | 110 VAC



Description	Part No.
110 VAC Electric Threading Tool to suit UK-D 20, 25 & 32. Die Heads sold separately.	ELEC-530003
110 VAC Electric Threading Tool sold complete with UK-D 20, 25 & 32 Die Heads.	ELEC-530014

Not suitable for use with 50 mm Die Heads

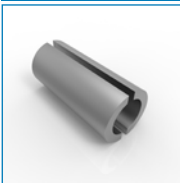
Ratchet & Handle



Description	Part No.
Ratchet & Handle to suit UK-D 20, 25, 32 & 50	UK-D RATCHET

Die Heads sold separately

Collets (Pair)



Conduit Ø (mm)	Part No.
20	UK COLLET 20
25	UK COLLET 25
32	UK COLLET 32
50	UK COLLET 50

Example use: To reduce the marking of the conduit during the threading process

Die Head (includes Dies & Guide)



Conduit Ø (mm)	Part No.
20	UK-D 20
25	UK-D 25
32	UK-D 32
50	UK-D 50

Adaptor | Isometric to NPT



Size	Part No.	
	ISO	NPT
20	1/2"	UK ISO 20-NPT1/2
25	3/4"	UK ISO 25-NPT3/4
32	1"	UK ISO 32-NPT1

Male thread = NPT / Female thread = Metric

Adaptor | Isometric to PG



Size	Part No.	
	ISO	NPT
20	11	UK ISO 20-PG11 *
20	13.5	UK ISO 20-PG13.5 *
25	11	UK ISO 25-PG11 *
25	13.5	UK ISO 25-PG13.5 *
32	13.5	UK ISO 32-PG13.5 *
32	16	UK ISO 32-PG16 *
32	21	UK ISO 32-PG21 *

Male thread = Metric / Female thread = PG

Reducer



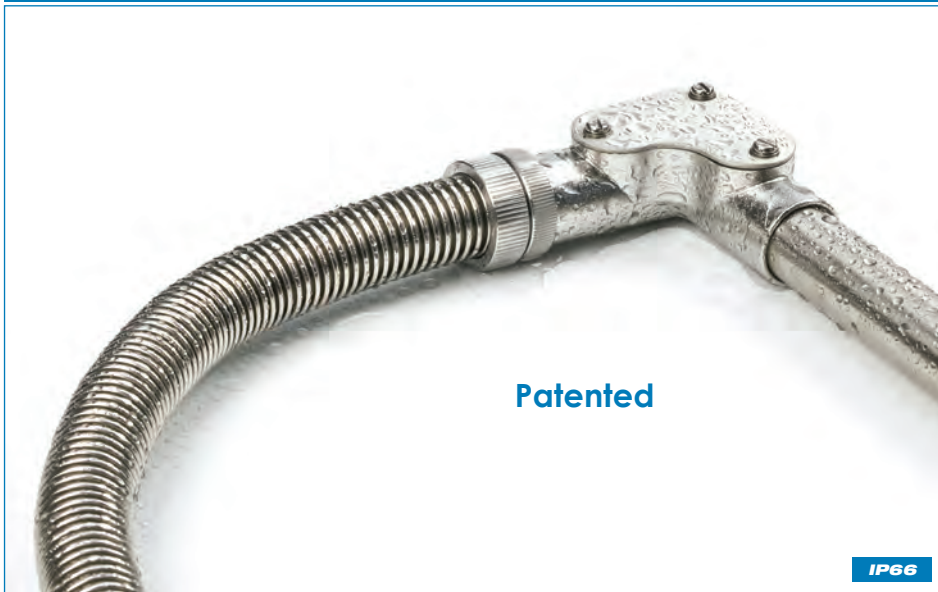
Size (mm)	Part No.	
	W	H
20	16	UK Y20-16
25	16	UK Y25-16
25	20	UK Y25-20
32	20	UK Y32-20
32	25	UK Y32-25

Additional Fasteners



Description	Part No.
Pack of 10 - M5 Hexagon Nuts (A4 - 316)	M5 HEX A4 x 10
Pack of 10 - M5 Flat Washers (A4 - 316)	M5 FLAT A4 x 10
Pack of 10 - M5 x 20 Countersunk Machine Screws (A4 - 316)	M5-20 CSK A4 x 10
Pack of 10 - M5 x 40 Countersunk Machine Screws (A4 - 316)	M5-40 CSK A4 x 10
Pack of 10 - M5 x 60 Countersunk Machine Screws (A4 - 316)	M5-60 CSK A4 x 10

IP66 Flexible Conduit & Gland

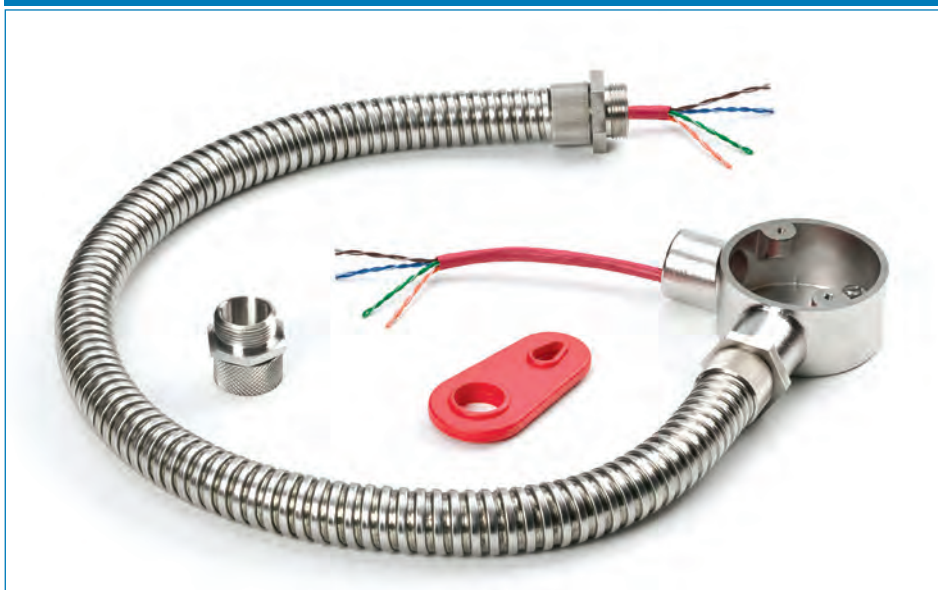


Conduit Ø (mm)	Flexible Hose Part No.	Gland Part No.
20	UK FLEX-HOSE20	UK GLAND-HOSE20
25	UK FLEX-HOSE25	UK GLAND-HOSE25

Specification

Material	1.4404 - 316 Stainless Steel
Rating	IP66 - Sira 58D18322A†
Length	Sold per metre
Glands	2 required per length
Thread	ISO form 1.5 mm pitch

Flexible Conduit & Gland



Conduit Ø (mm)	Flexible Hose Part No.	Gland Part No.
16	UK FL16	UK ADAPT16
20	UK FL20	UK ADAPT20
25	UK FL25	UK ADAPT25

Specification

Material	1.4301 - 304 Stainless Steel
Rating	Not Waterproof
Length	Sold per metre
Glands	2 required per length
Thread	ISO form 1.5 mm pitch